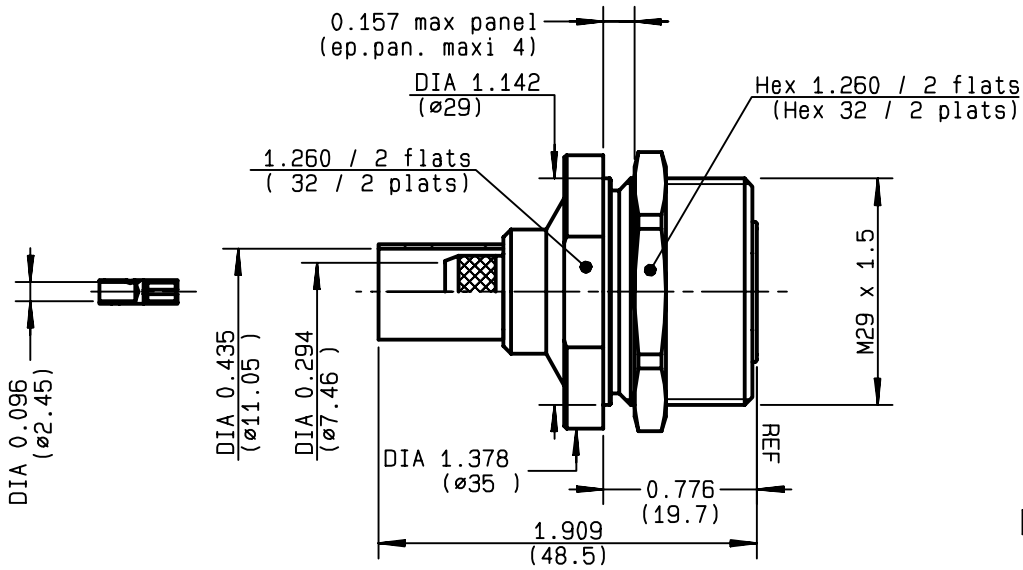
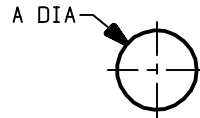


**STRAIGHT BULKHEAD JACK CRIMP TYPE  
REAR MOUNT - CABLE 10/50 S**

**R185.304.000**  
**SERIES 7-16**



PERCEGE PANNEAU  
MOUNTING HOLE



A	MM		INCH	
	maxi	mini	maxi	mini
	29.2	29.1	1.150	1.146

NOMINAL IMPEDANCE	<b>50</b> Ω
FREQUENCY RANGE	<b>0-7.5</b> GHz
TEMPERATURE RATING	<b>-55/+155</b> °C
V.S.W.R	<b>1.20</b> + x F(GHz)Maxi
RF INSERTION LOSS	<b>0.05</b> √F(GHz) dB Maxi
VOLTAGE RATING	<b>1400</b> Veff Maxi
DIELECTRIC WITHSTANDING VOLTAGE	<b>2700</b> Veff Mini
INSULATION RESISTANCE	<b>10000</b> MΩMini
HERMETIC SEAL	<b>NA</b> Atm.cm <sup>3</sup> /s
LEAKAGE (pressurized only)	<b>NA</b>
MECHANICAL DURABILITY	<b>500</b> Cycles
WEIGHT	<b>120</b> gr
SPECIFICATION	

CABLES : **KX 4**  
**RG 213**  
**RG 393**

OTHERS CHARACTERISTICS

ROS :	<b>1.10</b>	a 3 GHz
CABLE RETENTION	<b>250</b>	N Mini
CENTER CONTACT RETENTION		
Axial force - mating end	<b>200</b>	N Mini
Axial force - opposite end	<b>100</b>	N Mini
Torque	<b>NA</b>	cm.N Mini
RECOMMENDED TORQUES		
Mating	<b>NA</b>	cm.N
Panel nut	<b>600</b>	cm.N
Clamp nut	<b>NA</b>	cm.N

CONNECTOR PARTS	MATERIALS	FINISH	(all values are given in micrometers)
BODY	BRASS	BBR 0.5 OVER SILVER 3	
OUTER CONTACT	BRASS	SILVER 5 OVER COPPER 0.5	
CENTER CONTACT	BERYLLIUM COPPER	SILVER 5 OVER COPPER 0.5	
INSULATOR	PTFE	-	
GASKET	-	-	
OTHERS PIECES	BRASS	BBR 2	

ISSUE	CREATION DATE	FILE PART-NUMBER
<b>9944C00</b>	<b>11/05/1994</b>	<b>EPC96-02</b>



**RADIALL**®

GAUTIER

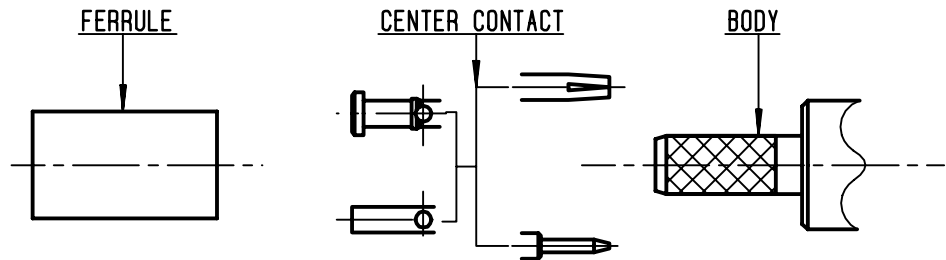
The information given here is subject to change without notice.  
Design changes may be in order to improve the product .

Connect to the future



**R185.304.000**

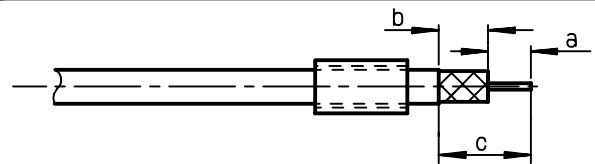
ISSUE **9944C00** SERIES **7-16**



①

Slide the ferrule onto the cable.  
Strip the cable.

-  
-

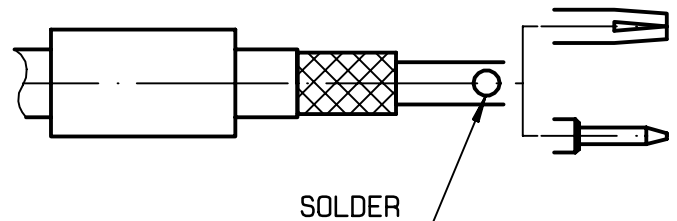


Stripping	a	b	c	d	e
inch	0.177	0.295	0.472	0	0
mm	4.5	7.5	12		

②

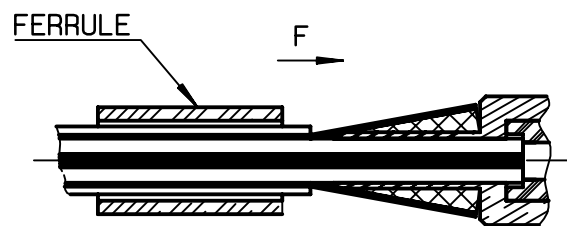
Solder the cable inner conductor into  
centre contact .

-  
-  
-  
-  
-



③

Fan the braid.  
Slide cable into body until it  
bottoms.  
Slide ferrule over the braid.  
(In direction F)



④

Crimp the ferrule with crimping tool  
R 282 231 000 ( Hex. : 0.415 ) or  
crimping tool R 282 293 000 (M22520/5-01)  
and dies R 282 235 116 (Y 116 DANIELS)  
Cut the excess of braid if necessary.

-  
-  
-  
-

